

*Hubble  
Bisbee*

CHRISTIE'S  
INTERNATIONAL REAL ESTATE



MILLGATE  
14210 SAWMILL COURT



LOCATIONS

2330 W Joppa Road, Suite 104  
Lutherville, MD 21093

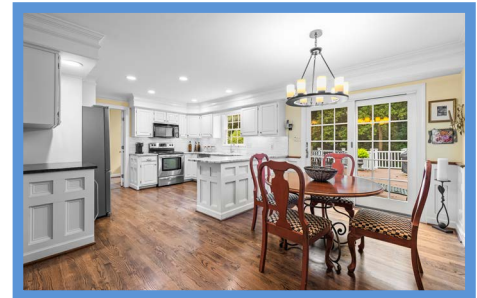
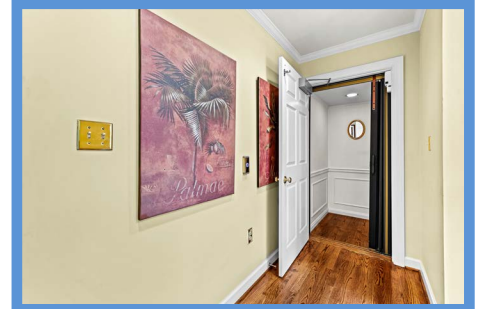
181 Harry S Truman Pkwy Ste 200  
Annapolis, MD 21401



MAUREEN LALLEY

REALTOR®  
MaureenLalley@HubbleBisbee.com  
410-790-5053 (Mobile)  
410-321-1411 (Office)

WWW.HUBBLEBISBEE.COM | (410) 321-1411 (OFFICE) | 



**FOYER** 13'7" X 10'3"

- Paneled entry door with sidelights
- Hardwood flooring
- Open oak staircase with hardwood handrails
- Crown molding
- Chair rail with wainscot moldings including staircase
- Cased portals to Living Room, Dining Room and Kitchen

**LIVING ROOM** 17'7" X 13'7"

- Hardwood flooring
- Woodburning fireplace with colonial mantel, brick surround and bluestone hearth
- Two windows with plantation shutters
- Crown molding
- Glazed door to Family Room

**DINING ROOM** 13'7" X 12'10"

- Hardwood flooring
- Two windows with plantation shutters
- Built-up dentil crown molding
- Chair rail with wainscot moldings
- Brass 6-light chandelier with ceiling medallion
- Double doors to Kitchen

**FAMILY ROOM** 23'0" X 13'3"

- Hardwood flooring
- Brick woodburning fireplace on raised hearth with colonial mantel shelf
- Built-in bookcases with base cabinets and entertainment center flanking fireplace
- Double sliding doors to Screened Porch
- Crown molding
- Recessed lighting
- Wide cased portal to Kitchen

**KITCHEN** 19'9" X 13'3"

- Hardwood flooring
- White raised-panel wood cabinetry including peninsula, lazy-Susan base cabinets and wall cabinet, glass-door cabinet and wine rack
- Leathered granite counters
- Subway tile backsplashes
- Kenmore stainless steel French door refrigerator with icemaker
- Edgestar under-counter wine cooler
- Kenmore stainless steel electric range
- Kenmore built-in microwave
- Kenmore stainless steel dishwasher
- Stainless steel undermount sink with Insinkerator disposal
- Breakfast area with sliding glass doors to Deck,

paneled wainscot and 6-light 'candle' chandelier

- Window at sink
- Built-up crown molding
- Pantry closet
- Recessed lighting
- Under-cabinet lighting
- Concealed staircase to Lower Level
- Access to Back Hall

**POWDER ROOM**

- Access from Foyer
- Hardwood flooring
- Wrought iron vanity stand with granite top, hammered brass sink and framed mirror
- Toto flush
- Crown molding
- Drum ceiling light
- Exhaust fan

**BACK HALL**

- Hardwood flooring
- Elevator stop
- Window
- Crown molding
- Double closet
- Recessed lighting



- Access to Garage
- Access to Laundry Room

**LAUNDRY ROOM** 8'9" X 5'8"

- Hardwood flooring
- White raised-panel base cabinets and wall cabinets
- Laminate counter
- Maytag washer and dryer- 2025 Never used!
- Window
- Ceiling light

**GARAGE** 24'10" X 23'3"

- Two-car, finished
- Automatic door opener
- Epoxy floor finish 2025
- Two windows
- New Utility sink
- Storage alcove
- Wall mount shelf

**UPPER LEVEL**

**HALL**

- Landing for staircase
- Hardwood flooring
- Crown molding
- Chair rail with wainscot moldings

- Linen closet
- Glass globe pendant light and brass/beveled glass ceiling light

**PRIMARY BEDROOM** 19'4" X 12'11"

- Double door entry
- Hardwood flooring
- Two windows with plantation blinds
- Crown molding
- Ceiling fan
- Access to Primary Bath
- French Doors leading to Office/Den with the elevator

**UPSTAIRS DEN/HOME OFFICE**

23'4" X 22'1"

- Hardwood flooring
- Elevator stop
- Built-in bookcases with base cabinets flanking window
- Triple window, 2 dormer windows and additional window
- Ceiling fan

**PRIMARY BATH** 11'9" X 8'6"

- Stone finish porcelain tile floor and shower stall walls
- Double vanity with quartz top, undermount sinks,

mirrored medicine cabinets and wall sconce light

- Shower stall with glass tile border, wall niche, additional handheld shower and sliding glass door enclosure
- Gerber flush
- Custom fitted walk-in closet 2025
- Window with plantation shutters
- Recessed lighting
- Exhaust fan

**BEDROOM 2** 13'9" X 10'5"

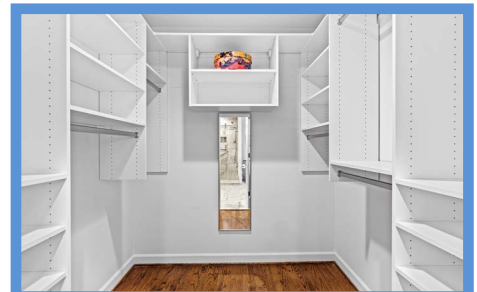
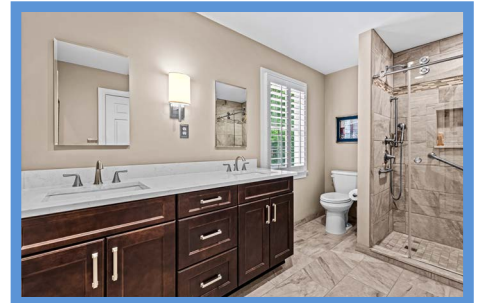
- Hardwood flooring
- Window with plantation shutters
- Closet

**BEDROOM 3** 14'2" X 13'9"

- Hardwood flooring
- Two windows with plantation blinds and cornices
- Two closets
- Ceiling fan

**BEDROOM 4** 12'2" X 10'10"

- Hardwood flooring
- Two windows
- Double closet





### HALL BATH

- Stone finish porcelain tile floor
- Vanity with quartz top, undermount sink, mirrored medicine cabinet and wall sconce lighting
- Tub/shower combination
- Mirabelle flush
- Window with plantation shutters
- Exhaust fan

### LOWER LEVEL

#### RECREATION ROOM 25'10" X 24'1"

- Wall-to-wall carpeting including staircase
- Sliding glass doors to yard

- Recessed lighting
- Electric service panels concealed by shutters
- Closet with sump pump

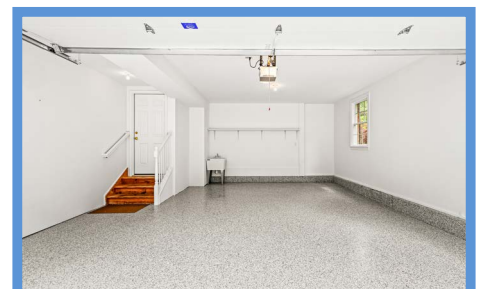
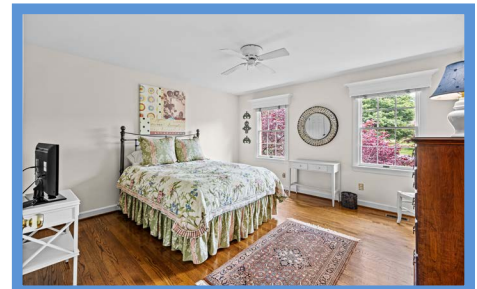
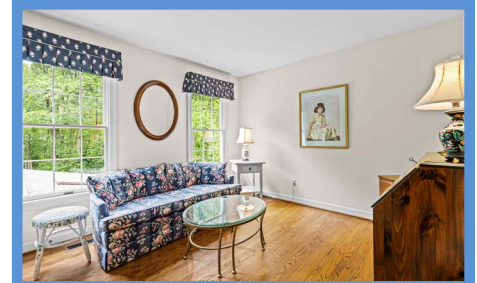
#### UTILITY/STORAGE ROOM

25'10" X 16'2"

- Unfinished
- All electric HVAC unit with Aprilaire electronic air cleaner
- Rheem electric water heater
- Well water tank
- Transom window
- Storage areas

### EXTERIOR

- Brick with beaded aluminum siding
- Asphalt shingle roof
- Brick walkway to covered brick porch with classic columns at main entry
- Screened Porch with vaulted ceiling, 4 skylights, ceiling fan, screened door to Deck and sliding glass doors from Family Room
- Engineered wood Deck with vinyl railings, steps to yard and Patio, sliding glass door from Kitchen
- Brick paver Patio with walkway to parking pad and garden steps to yard
- Backs to trees
- Total 2.16 landscaped partially wooded acres



All information contained herein deemed reliable but not guaranteed by the Broker